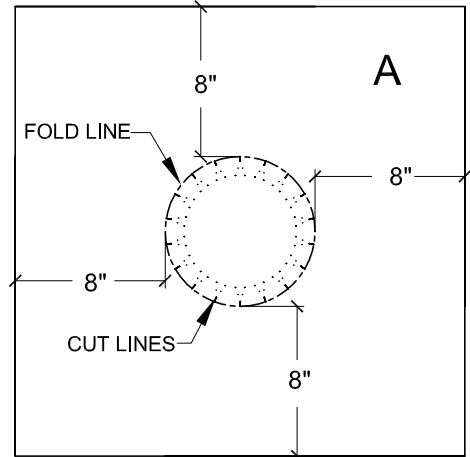
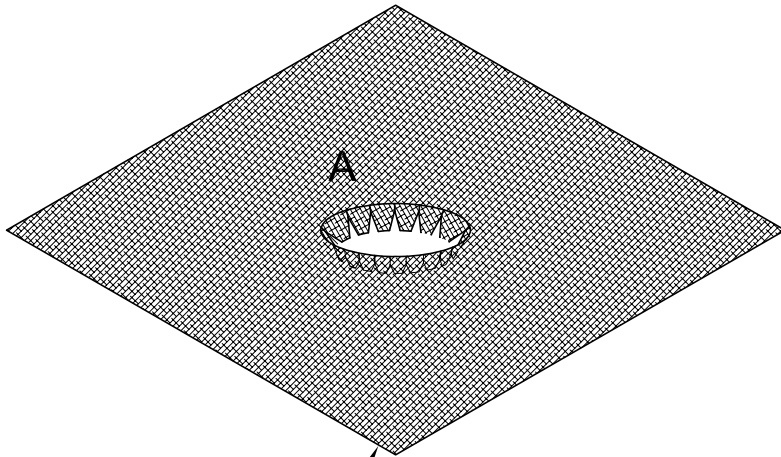
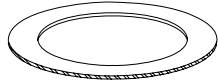
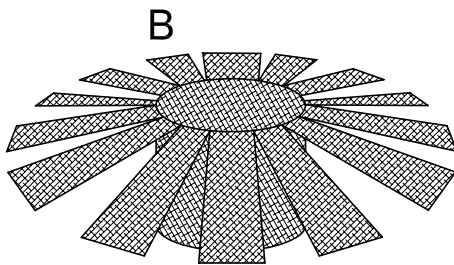


CLAMPING RING

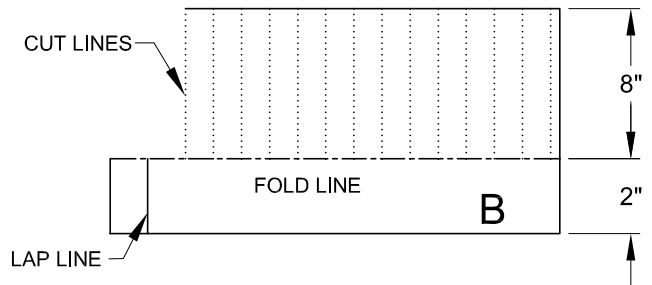
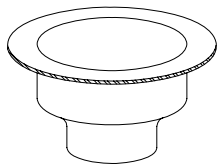


A 2-PIECE "A" SHEET MAY BE NECESSARY FOR STEEP SUMPS. DRY FIT SCRIM TO DETERMINE CONFIGURATION.

STEP A TARGET PATCH



DRAIN BODY



STEP B DRAIN INSERT

**NOTES:**

- A. USE SCRIM DETAIL IN CONJUNCTION WITH THE PERMAFLASH LAYOUT DRAWING, PMF-5.
- B. EMBED ALL PRE-CUT SCRIM INTO A FULL WET BASE COAT OF MBR FLASHING CEMENT. ALLOW EACH COAT TO FULLY CURE BEFORE APPLICATION OF SUBSEQUENT COATS.
- C. ENCAPSULATE ALL SCRIM COMPLETELY WITH A MINIMUM OF A 60 MIL COVERING.
- D. ALL FOLD LINES REPRESENTED AS -----, AND ALL CUT LINES REPRESENTED AS .....

PERMAFLASH DRAIN SCRIM DETAIL

DRAWING NO.

**PMF-5S**

SCALE  
N.T.S

ISSUE DATE  
23 FEB 07

REV. NO.  
0

CAD FILE:  
PMF\_5S.dwg

**J M**  
Project Design Mechanical Fastening



**D E S I G N**  
Details Specs Sheet Layout Tapered Insulation Governing Codes Wind

